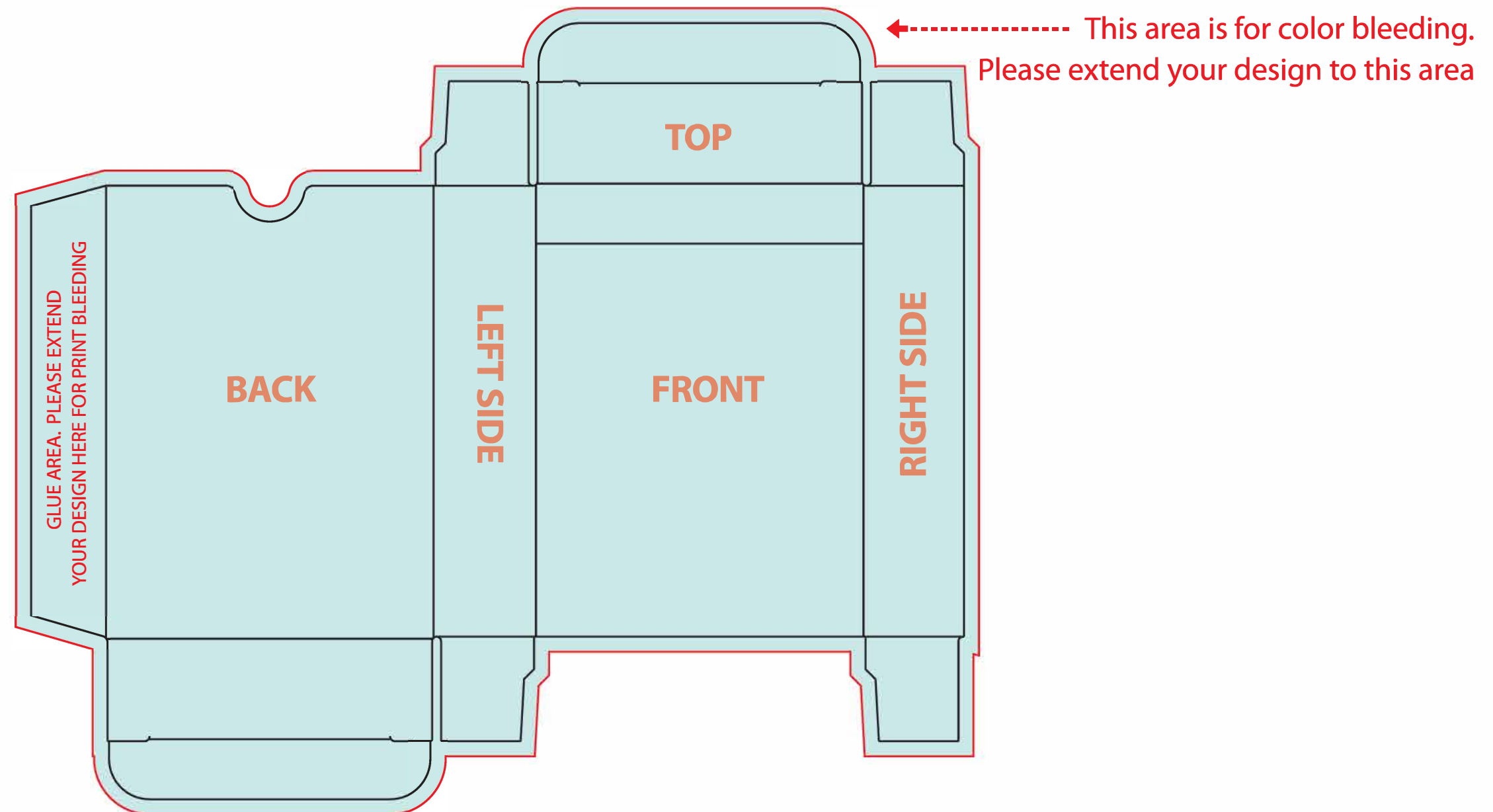


Tuck box template for playing cards with total deck thickness of 20.5mm (55 Cards poker size card 2.5" x 3.5")



Steps:

- 1 Save and open this template on Adobe Illustrator.
- 2 Add you artwork design to layer named "addYourDesign".
- 3 *** IMPORTANT NOTE: Please do not move the position of the box template to ensure your artwork will be printed properly.**
- 4 Before you send the file back to us, please hide the box template layer named "hiddenLayerWhenFinished".
- 5 Save your file and send back to us.